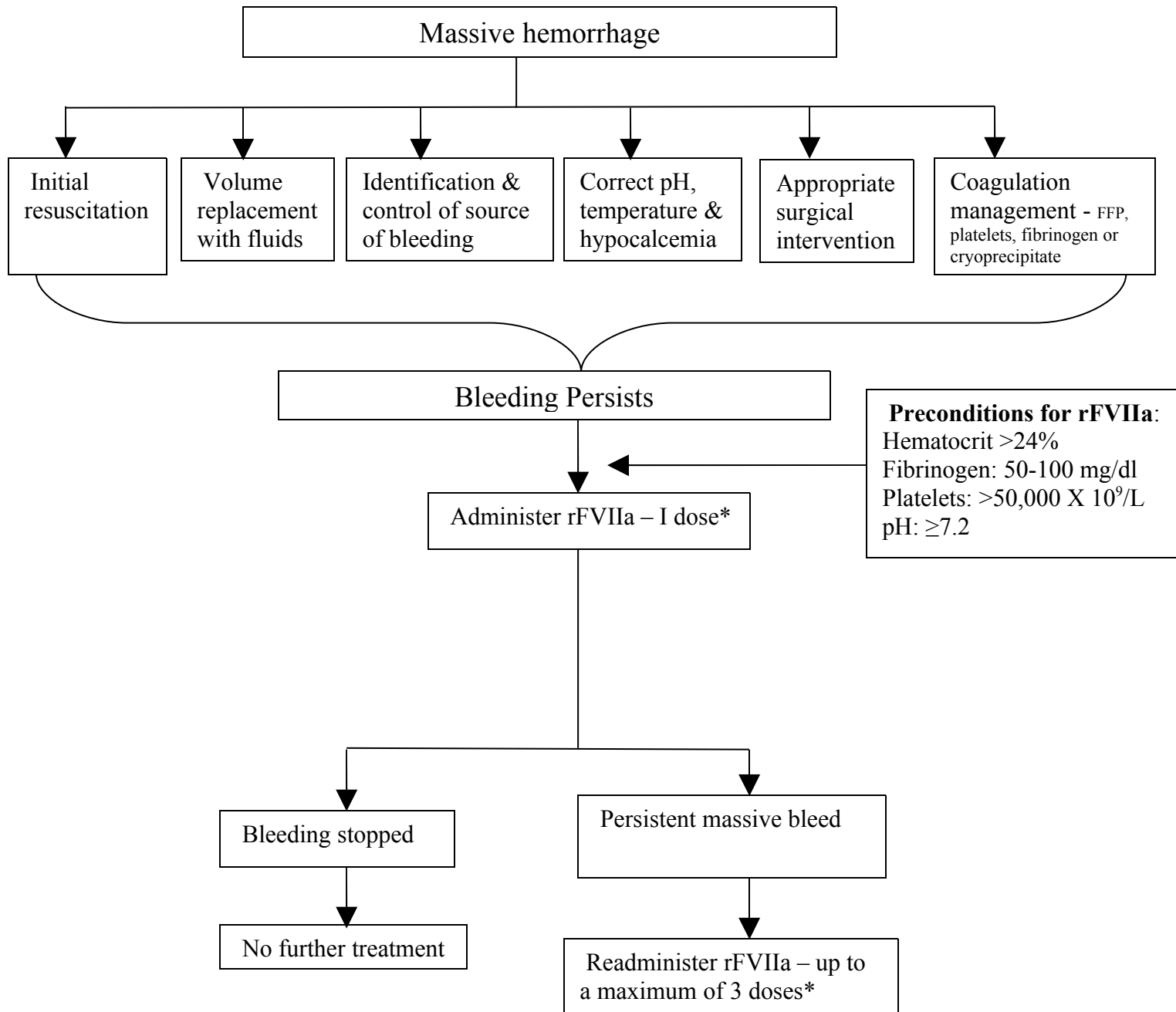


Flow chart for management of Polytrauma-related bleed



Note: *Recommendation is initial dose of rFVIIa is 90-100 mcg/kg, followed if necessary by second and third doses respectively at 1 h and 3 h after the first dose.

As per NICE-2009 data however, the median dose used for traumatic hemorrhage was 60mcg/kg with a range of 40-120mcg/kg